



# GAT MONTHLY MEMBERSHIP PROGRESS REPORT

Results as of: 3/31/2022

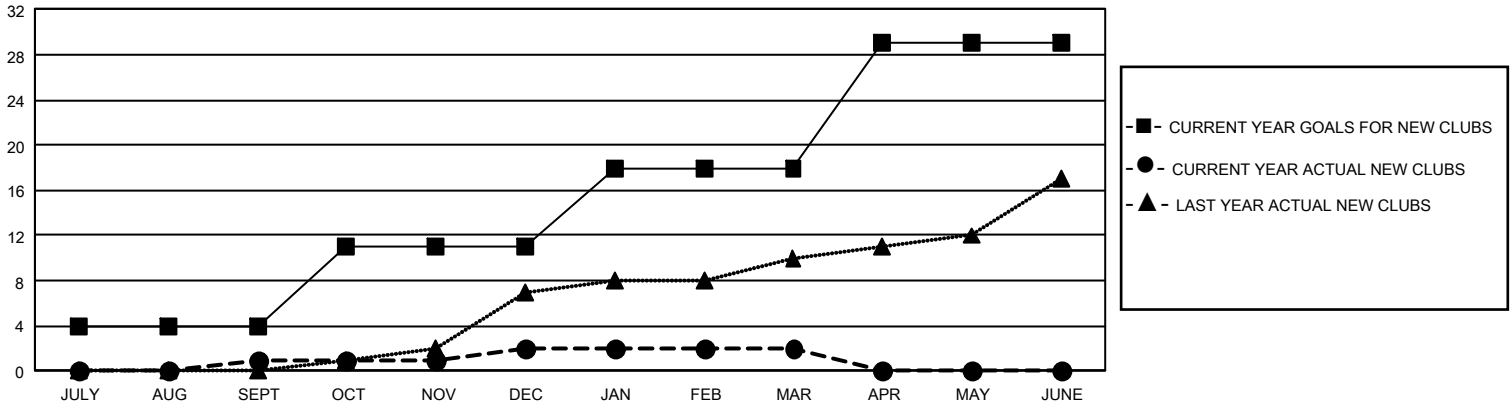
## GMT Constitutional Area 1, Group E

REPORT DOES NOT INCLUDE CLUBS IN UNDISTRICTED AREAS.

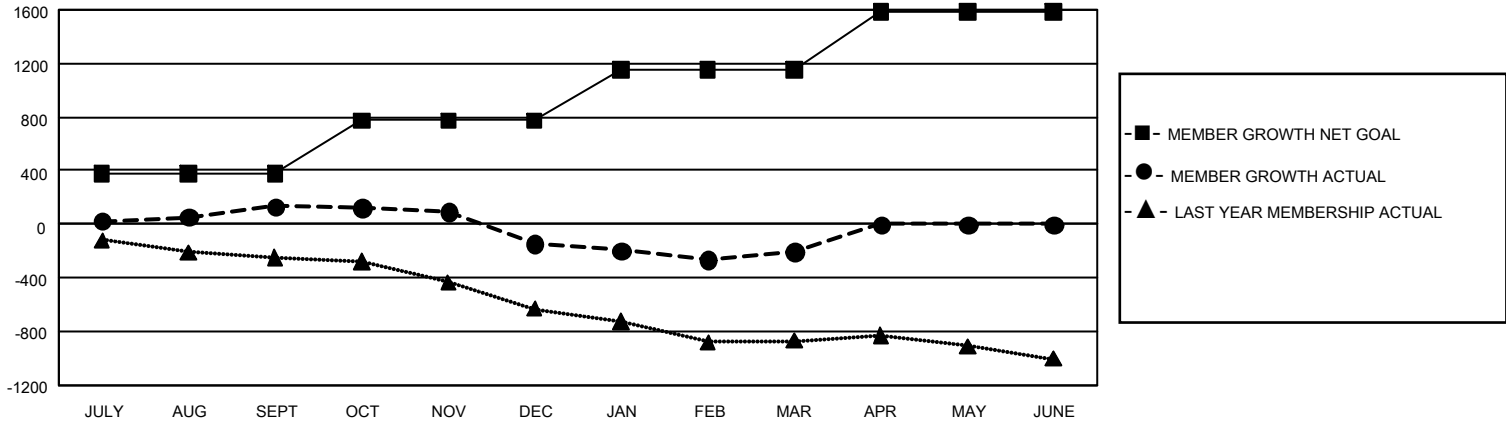
| Clubs                 |               |           |               |
|-----------------------|---------------|-----------|---------------|
| RESULTS FOR 2021-2022 |               |           |               |
| QUARTER               | NEW CLUB GOAL | NEW CLUBS | DROPPED CLUBS |
| JULY/AUG/SEPT         | 12            | 1         | 7             |
| OCT/NOV/DEC           | 21            | 1         | 11            |
| JAN/FEB/MAR           | 21            | 0         | 4             |
| APR/MAY/JUNE          | 33            | 0         | 0             |

| Members               |                        |                      |  |
|-----------------------|------------------------|----------------------|--|
| RESULTS FOR 2021-2022 |                        |                      |  |
| QUARTER               | MEMBER GROWTH NET GOAL | MEMBER GROWTH ACTUAL | DROPPED MEMBERS ACTUAL (including transfers) |
| JULY/AUG/SEPT         | 378                    | 888                  | 646  |
| OCT/NOV/DEC           | 397                    | 679                  | 879  |
| JAN/FEB/MAR           | 375                    | 694                  | 706  |
| APR/MAY/JUNE          | 435                    | 0                    | 0  |

GOALS AND ACTUAL NEW CLUBS CUMULATIVE



GOALS AND ACTUAL MEMBERS CUMULATIVE



|                        |   |                                 |                 |
|------------------------|---|---------------------------------|-----------------|
| DROPPED CLUBS: 22      | 563 CLUBS OF 1,032 ADDED 1 OR MORE NEW MEMBERS            | <u>GENDER DISTRIBUTION</u>      |                 |
| <u>DROPPED MEMBERS</u> |   | MALE                            | 21,978 (71.81%) |
| DECEASED               | 385   | FEMALE                          | 8,625 (28.18%)  |
| CLUB CANCELLED         | 115   | NON BINARY                      | 0 (0.00%)       |
| OTHER                  | 1,731   | PREFER NOT TO ANSWER            | 1 (0.00%)       |
| TOTAL                  | 2,231   | TOTAL FAMILY UNIT MEMBERS       | 5,438           |
|                        | <a href="#">CLICK HERE FOR CUMULATIVE MEMBERSHIP DATA</a> | FAMILY MEMBERS PAYING HALF DUES | 2,780           |